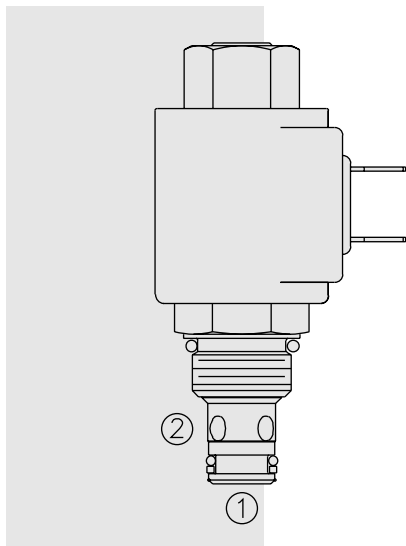


# SOLENOID VALVES

## SV08-21 Poppet, 2-Way, Normally Open



### DESCRIPTION

A solenoid-operated, 2-way, piloted, poppet-type, normally open, screw-in, hydraulic cartridge valve designed for low leakage in load-holding applications.

### OPERATION

When de-energized, the **SV08-21** allows flow from ② to ①. Flow from ① to ② is severely restricted in this mode. If the ② to ① path is required see model SV08-23, page 1.050.1.

When energized, the valve's poppet closes on its seat, blocking flow from ② to ①. In this mode the cartridge will allow ① to ② flow after overcoming the solenoid force (requires 3.4 to 10.3 bar [50 to 150 psi]).

**Operation of Manual Override Option:** To override, push and hold override button.

### FEATURES

- Continuous-duty rated coil.
- Hardened seat for long life and low leakage.
- Optional coil voltages and terminations.
- Efficient wet-armature construction.
- Cartridges are voltage interchangeable.
- Unitized, molded coil design.
- Manual override option.
- Optional waterproof E-Coils rated up to IP69K.
- Industry common cavity.
- Compact size.

### RATINGS

**Operating Pressure:** 207 bar (3000 psi)

**Flow:** See Performance Chart

**Internal Leakage:** 0.15 cc/minute (3 drops/minute) max. at 207 bar (3000 psi)

**Temperature:** -40 to 120°C with standard Buna seals

**Coil Duty Rating:** Continuous from 85% to 115% of nominal voltage

**Response Time:** First indication of change of state with 100% voltage supplied at 80% of nominal flow rating: Energized: 50 msec.; De-energized: 16 msec.

**Initial Coil Current Draw at 20°C:** Standard Coil: 1.2 amps at 12 VDC; 0.13 amps at 115 VAC (full wave rectified). E-Coil: 1.4 amps at 12 VDC; 0.7 amps at 24 VDC

**Minimum Pull-in Voltage:** 85% of nominal at 207 bar (3000 psi)

**Filtration:** See page 9.010.1

**Fluids:** Mineral-based or synthetics with lubricating properties at viscosities of 7.4 to 420 cSt (50 to 2000 ssu)

**Installation:** No restrictions; See page 9.020.1

**Cavity:** VC08-2; See page 9.108.1

**Cavity Tool:** CT08-2XX; See page 8.500.1

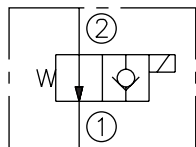
**Seal Kit:** SK08-2X-T; See page 8.650.1

**Coil Nut:** Part No. 7004410;

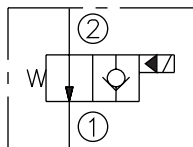
For E-coils manufactured prior to 1-1-04, see page 3.400.1 for coil nut info.

### SYMBOLS

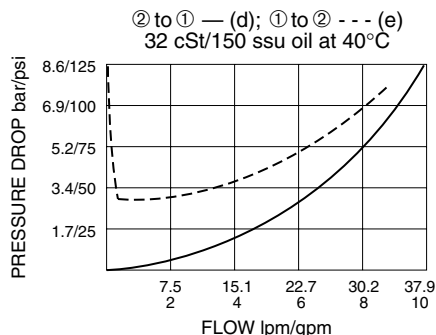
#### USASI:



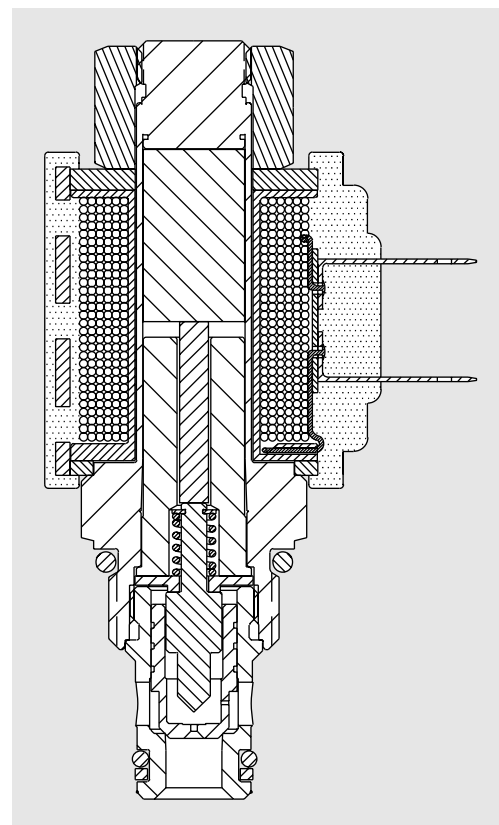
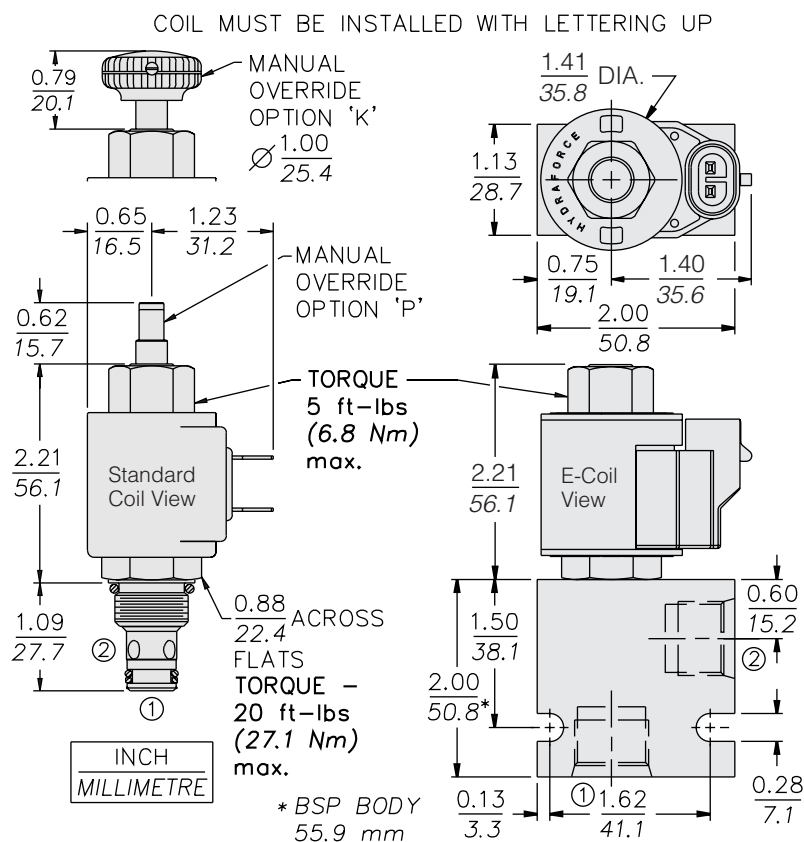
#### ISO:



### PERFORMANCE (Cartridge Only)



## DIMENSIONS



## MATERIALS

**Cartridge:** Weight: 0.09 kg. (0.20 lbs.); Steel with hardened work surfaces. Zinc-plated exposed surfaces; Buna N O-rings and back-up standard.

**Standard Ported Body:** Weight: 0.16 kg. (0.35 lbs.); Anodized high-strength 6061 T6 aluminum alloy, rated to 240 bar (3500 psi); See page 8.008.1. Ductile iron and steel bodies available; consult factory.

**Standard Coil:** Weight: 0.11 kg. (0.25 lbs.); Unitized thermoplastic encapsulated, Class H high temperature magnetwire; See page 3.200.1.

**E-Coil:** Weight: 0.14 kg. (0.3 lbs.); Fully encapsulated with rugged external metal shell; Rated up to IP69K with integral connectors; **Note: See page 3.400.1 for all E-Coil retrofit applications.**

## TO ORDER

### SV08-21

<u>Option</u>		<u>Voltage Std. Coil</u>		<u>Termination (VDC) Std. Coil</u>	
None (Blank)		0	Less Coil**	DS	Dual Spades
Manual Override without Knob	P	10	10 VDC†	DG	DIN 43650
Manual Override with Knob	K	12	12 VDC	DL	Leadwires (2)
<u>Porting</u>	Cartridge Only	24	24 VDC	DL/W	Leads w/Weatherpak® Connectors
		36	36 VDC	DR	Deutsch DT04-2P
		48	48 VDC	<u>Termination (VAC) Std. Coil</u>	
		24	24 VAC	AG	DIN 43650
		115	115 VAC	AP	1/2 in. Conduit
	SAE 4	230	230 VAC	<u>Termination (VDC) E-Coil</u>	
1/4 in. BSP*	2B	**Includes Std. Coil Nut		ER	Deutsch DT04-2P (IP69K Rated)
3/8 in. BSP*	3B	† DS, DW or DL terminations only		EY	Metri-Pack® 150 (IP69K Rated)
*BSP Body; U.K. Mfr. Only		<u>E-Coil</u>			
		10	10 VDC		
		12	12 VDC		
		20	20 VDC		
		24	24 VDC		
<u>Seals</u>					
Buna N (Std.)	N				
Fluorocarbon	V				

Coils with internal diode are available. Consult factory.